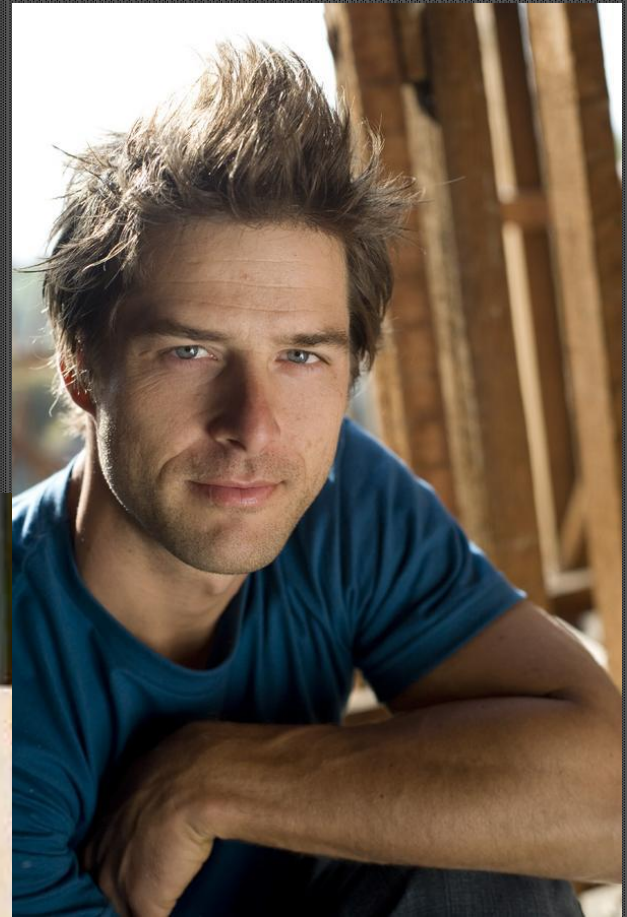


# DARREN MOORE

## THE *Eco*-*MacGYVER*



# SUSTAINABLE DESIGN AND CONSTRUCTION

Vintage black tuxedo suit  
White shirt by Dior Vintage  
Vintage white loafers

**BEST OF THE BEST**  
FOR THE  
**ENVIRONMENT**

The Environmental section of the B Impact Assessment evaluates a company's products, operations (materials, energy use, facilities, emissions), and supply chain.

These Best of the Best B Corps are on the cutting edge of environmental responsibility, tackling everything from waste management and energy usage to transportation policies and materials used in manufacturing their products.

**B Corps are 66% Better than OSBs**  
**Top 10s are 5X Better than OSBs**

B Corp Top 10s*	B Corp Average	Other Sustainable Businesses*
46	14	8

\*Those with scores in the top 10% in the Environment section of the B Impact Assessment

**Brightworks**  
Bullfrog Power  
Ecovations  
gDiapers  
Global Green Energy Corp  
GoLite  
Green Building Services  
Guayaki Sustainable Rainforest

**Products**  
IceStone  
Larry's Beans  
Method Products  
Namaste Solar  
New Leaf Paper  
★ Patagonia  
Piedmont Biofuels  
Preserve  
Re-Vision Architecture  
Salt Spring Coffee

**ALTER ECO**  
DARREN MOORE

- *Darren's focus is to add value through his work and inspire others to take on the challenge of building a better home, neighborhood, city, country and world by connecting the large issues to small and simple everyday choices.*



# DESIGNS FOR GOOD LIVING



- *Ecovations, is a for-good company that solves ecological problems in the world through design, construction and consulting. Darren's goal is to improve people's lives by providing more access to healthful environments.*



# FROM CONCEPT TO COMPLETION



- *Darren consults from the architectural inception on interior design, building, fabrication and even does the general contracting.*



# WASTE NOT, WANT NOT



- *Darren consults for film, television and events on set reclamation and production design, educational programs and waste diversion.*



# MUSE



- *Darren's Ecovations redesigned and rebuilt the MUSE School in Malibu where students are literate about green technologies and dedicated to preserving the planet, and conscious about where their food comes from.*



# Eco-SCHOOL



*Suzy Amis Cameron founded MUSE with her sister Rebecca in 2006 following the same philosophy and was renovated by Ecovations Lifestyle's Darren Moore with a zero-waste and zero-emissions goal.*



# LIFE'S A BEACH



*As the sustainability advisor for this beachfront home Darren aligned the construction and design teams with green materials and processes; overseeing the LEED platinum certification.*



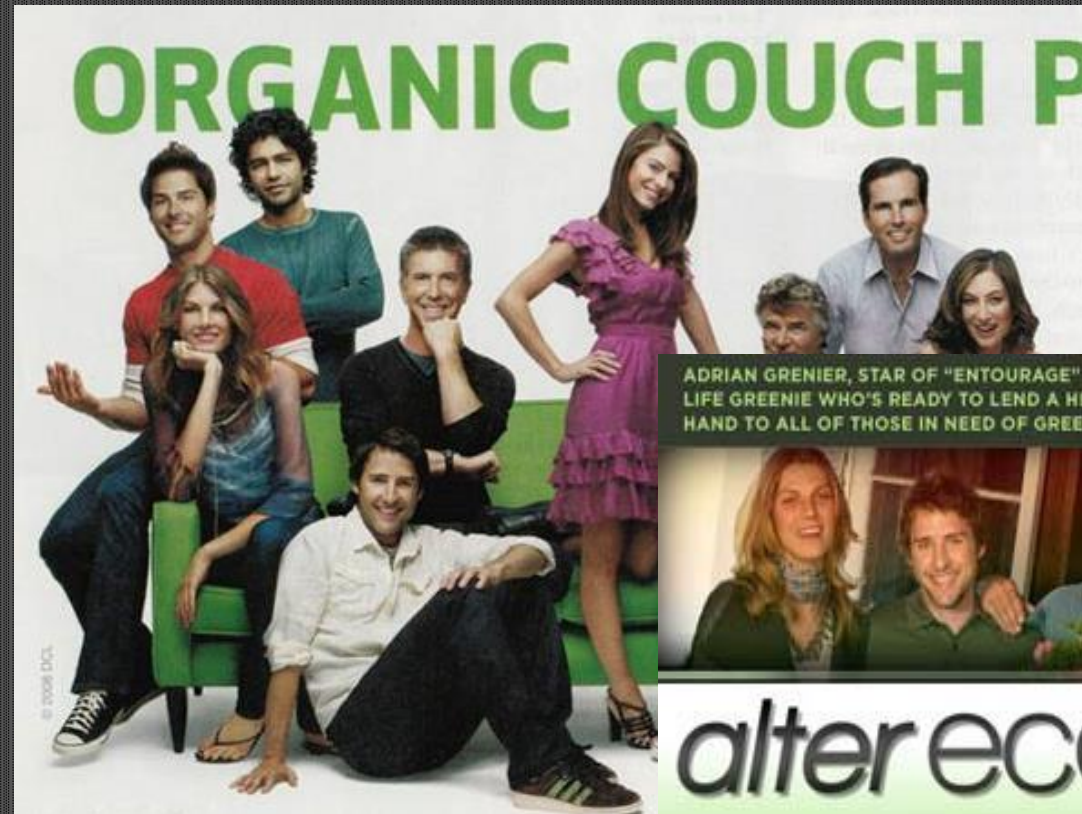
# HOST, EMCEE AND SPOKESPERSON

## DARREN MOORE





# STAR OF ALTER ECO ON PLANET GREEN



Darren Moore (far right) and his eco-friendly home renovation business are the stars of Planet Green's "Alter Eco," which also features (l-r) Adrian Grenier, Angela Lindvall and Boise Thomas.

*Photo courtesy of Discovery Channel*

ADRIAN GRENIER, STAR OF "ENTOURAGE" - IS A REAL LIFE GREENIE WHO'S READY TO LEND A HELPING HAND TO ALL OF THOSE IN NEED OF GREEN HELP!



alter eco



- o "Darren Moore, - the founder of *Ecovations* --- even alongside (Adrian) Grenier, star of HBO's 'Entourage,' and supermodel Angela Lindvall, he's the clear star of Planet Green's 'Alter Eco'."
- Justin Petruccelli, Associate Editor for *Entrepreneur.com*



# GARAGE MAHAL, DIY NETWORK



*Hosted by Wrestler, Bill Goldberg, the celebrity garage makeovers by Darren Moore included; Jay Leno Adam Carolla Joe Rogan. Other Notable garages: Hotrod magazine Huntington Beach, Car and Driver in Michigan and the Chicago Museum of Science and Industry smart home garage.*



# LIVING WITH ED



*Darren Moore appeared as a frequent on-camera green building technical advisor on the HGTV Network show "Living with Ed" Starring Ed Begley Jr and his wife, Rachelle Carson-Begley*



# AMERICAN DREAM BUILDERS

PREMIERES MARCH 23 | SUNDAYS 8/7c

Before the homes get pretty,  
the competition gets ugly.

AMERICAN  
DREAM BUILDERS





# DARREN'S DESIGNS ON *TUDOR HOME*

## EPISODE 101, BOYS ROOM

**Before**



**After**





# DARREN'S DESIGNS ON *MID-CENTURY MAKEOVER*

## EPISODE 102, LANDSCAPING

### Before



### After





# DARREN'S DESIGNS ON SPANISH STYLE MAKEOVER

## EPISODE 103, LANDSCAPING

### Before



### After



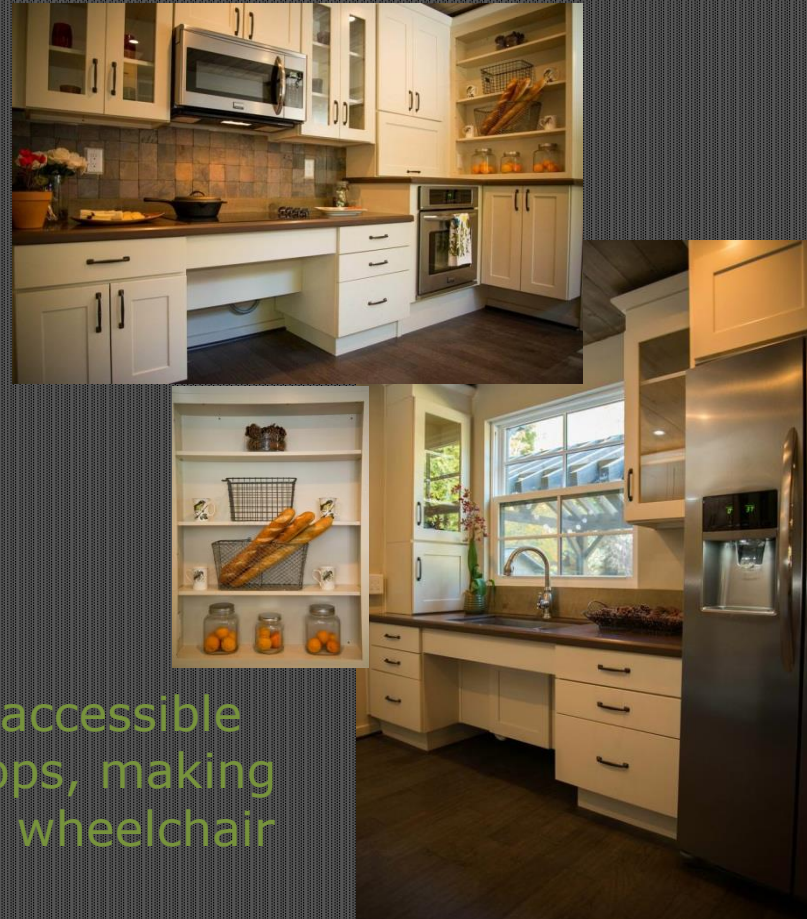


# DARREN'S DESIGNS IN *A CABIN IN THE WOODS* EPISODE 104, ADA KITCHEN

## Before



## After



Darren set out build a wheelchair accessible kitchen, by lowering the countertops, making room under the sink and adding a wheelchair ramp at the entry.



As **SITE MANAGER** OF *CABIN IN THE WOODS*  
DARREN OVERSAW THE ENTIRE PROJECT





# *DARREN MOORE & ELAINE GRIFFIN'S DESIGN*

## *MODULAR HOME, EPISODE 105*



# MODULAR HOME, EPISODE 105





# Ready for Prime Time

## BETTER HOMES AND GARDENS

- *Darren Moore & Elaine Griffin's Winning Modular Home Design were featured in a spread in BHG magazine.*

Hang out with Nate Berkus? You don't have to ask us twice. We went behind the scenes of NBC's *American Dream Builders*—and brought home a suitcase





#### GIVE & TAKE

A solid sofa takes a back seat to showcase a patterned rug, curtains, and pillows.

**CURTAIN CALL**  
Tall curtains (hang 'em from ceiling to floor) are the cure for small windows.

## Talk about a squeeze play.

On this episode, designers were asked to decorate bare-bones 600-square-foot cottages. That's tiny! But the winning team, Elaine Griffin and Darren Moore, found room for big style. "I loved their decision not to use studio-size furniture," Nate says. "They created a gracious seating area with a generously proportioned sofa. I prefer that to having a lot of tiny places to sit." An airy coffee table and see-through lamp bases keep the room visually light. "I like the low end tables, too," Nate says. "Playing with scale is smart."



Here we are on set. From left: interior design expert and judge Monica Pedersen, *BHG* executive editor Oma Blaise Ford, *BHG* contributor Maxwell Ryan, host Nate Berkus, *BHG* contributor Khristian A. Howell, *BHG* creative director Michael Belknap,

## Even in a tiny bedroom,

you can slip in a desk or vanity. This team used a lively green Parsons table—it's svelte yet provides a large work surface. Nate also likes their choice to steer clear of visual clutter. On the walls, a pair of mirrors reflects light, and a pair of photos adds personality. "I like the symmetry," Nate says. "It gives a clean look that makes it feel like you're living with more space."



#### NEW NEUTRAL

A sunny biscuit hue gives the bedroom its own personality while meshing with the whole-house palette.





**CLEVER**  
A translucent screen lets light in while also giving the bedroom some welcome privacy.



**WORKIN' IT**  
Episode winners Darren and Elaine had only four days to complete this project. Whew!

### Tune in

See all the action on *American Dream Builders* at 8/7 p.m. Sundays on NBC, or watch at [nbc.com](http://nbc.com).

### Small doesn't have to equal claustrophobic.

A cohesive palette with subtle change-ups makes it feel like you have more real estate. Here, tan grasscloth-look wallpaper unifies the gathering and cooking zones—in reality one small room. But lighter toast tones on cabinets and a white backsplash give the kitchen its own identity. Be smart with open shelves, too, in a pint-size space. “It’s definitely worth it to invest in bowls and vessels that are all the same color,” Nate says. ■

For buying information see page 187.



# DARREN'S DESIGNS ON CALIFORNIA CRAFTSMAN, EPISODE 106



**After**





# CALIFORNIA CRAFTSMAN, EPISODE 106

## HOME GYM IN GARAGE

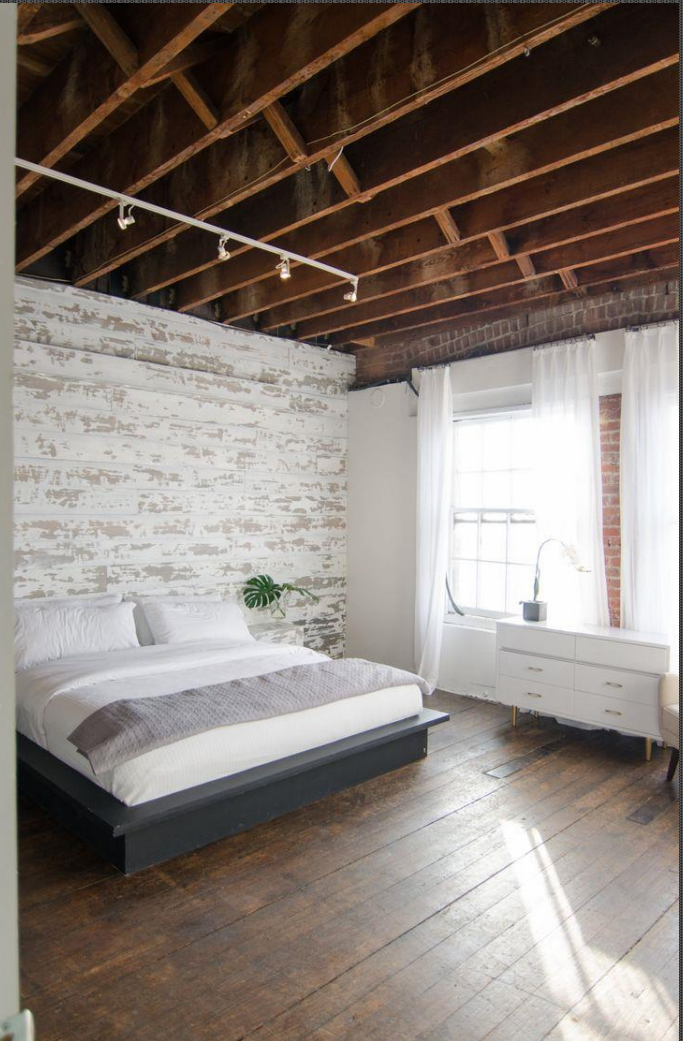


# DARREN'S DESIGNS ON *COLONIAL DUPLEX*, EPISODE 107





# DARREN'S DESIGNS ON *DOWNTOWN LOFTS*, EPISODE 108





# LICENSING AND REPRESENTATION: ECO VATIONS BRANDED PRODUCT IDEAS





# ECOVATIONS BRANDING: CLEAN-TECH ELECTRONIC SOLUTIONS





# ECOVATIONS BRANDED FURNISHINGS

## INDOORS AND OUTSIDE



# ECOVATIONS BRANDING: NON-CHEMICAL & PLASTIC-FREE SOLUTIONS

eco touch  
conscious car care

waterless car wash  
concentrate

U.S. (16.7 FL. OZ.) made in USA  
Caution: Use indoors. Avoid breathing mist.

eco touch  
PREMIUM TIRE SHINE

TIRE SHINE

promotes better traction  
conditions and protects your  
tires of harsh elements.

method  
all-natural plant-based wash

method  
dish soap

Helping families go  
**plastic-free** at lunch

**Plastic-free & reusable  
lunchtime solutions.**



# ECOVATIONS BRANDING: HOME FIXTURES, DOORS AND WINDOWS





## For Licensing Contact:

David S. Graff  
President  
SunGate Partners,  
Inc.  
200 W. 86th St.  
Suite 10C  
New York, NY 10024  
Phone:  
212-874-7572  
Cell:  
917-821-91844  
Fax:  
212-496-95766  
E-mail:  
dsgraff@aol.com

## For Press and Personal Appearance Inquiries Contact:

Nicole Hansen  
(818)308-5731  
n.hansen@greengala  
xyent.com

## FOR CONTRACTING AND DESIGN CONTACT:

ECOVATIONS | PHONE: 800-675-0326

EMAIL: [INFO@ECOVATIONS.COM](mailto:INFO@ECOVATIONS.COM)

[WWW.ECOMACGYVER.COM](http://WWW.ECOMACGYVER.COM)